



# Retriever Review

Founded 1975

Issue 9 ~ September 2013

## President's Message



*Hi All Lab Lovers,*

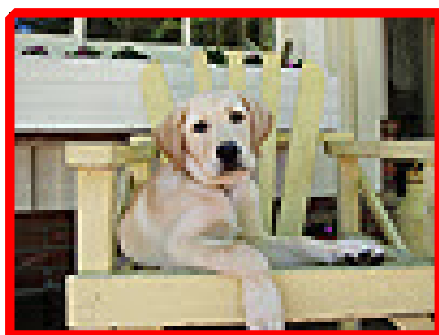
**H**ere we go! The BIG National Labrador Show-HRT-WC-Rally-Obedience-Tracking,etc is coming on like a Freight Train! Please attend the next General Membership meeting which has been moved this month out of sequence for better attendance to the Hospital (Sept. 20th at 7:30 p.m.). We will look for a good turnout. The RCLRC will be responsible for a few items that need to be taken up to the Show. We are looking for a couple volunteers to piece meal out those items, so the Club Trailer does not have to be used. Marilyn Parker will bring a few of those items with her to this meeting for volunteers. Think about your car and room should you volunteer to take a couple items.

**T**he Deadline for all entries is this coming Wednesday Sept. 11<sup>th</sup> ! Don't miss out ... get your entries in!

See you all soon,



*Your President ~ Barb Gilchrist*



### Upcoming Events

- |          |  |
|----------|--|
| Sept 20  | General Meeting at Meridan Park Hospital, Chec Bldg, Portland, OR 7:30PM |
| Oct 6-13 | LRC National Specialty Lacey Washington                                  |
| Oct 18   | General Meeting at Elmers Restaurant, Delta Park, Portland, OR 7PM       |

## Club Officers

President: Barb Gilchrist  
Vice President: Lisa Cruanas  
Secretary: Cindy Freeman  
Treasurer: Greg Huntzinger

~

### Board Members

Lizzie Moir  
Dave Illias  
Blake Leamy  
Marilyn Parker

~

### Committee Chairs

Jeff Kennedy - WC/WCX  
Judy Chambers/Susie Morrill  
2013 B Match  
Kim Leamy - 2013 Specialty  
Nikki Berthold-Illias  
2013 Hunt Test

~

### Litter Referrals

Susan & Greg Huntzinger  
(503)655-9405

~

### Membership

Betty Barkley  
(503)645-4187

~

### Newsletter Editor

Celeste Smith  
walablover@tds.net  
(360)263-2742

~

### Web Site

www.rosecitylrc.com  
Greg Huntzinger - Webmaster  
(503)655-9405



## Donations for the National Specialty Raffle

Any donations to the National Specialty Raffle would be greatly appreciated. Marilyn Parker is making up a basket from our club and more items are needed. If you need to have items picked up, contact Marilyn or bring them to the next meeting at the hospital.

Thanks!



## Brag!

At Sierra Vista last weekend under Michael Woods Marilyn Parker got 1st place under Hunting Retriever Bitch. Also her Sterling's Rose of San Antone got her last leg for her CD.



*Newsletter Guidelines ~ This newsletter is published monthly by the Rose City Labrador Retriever Club a non-profit organization and issued to all members in good standing. Contributions for publication and advertisements are welcome. Advertising rates are \$25.00 per half page and \$50.00 per whole page. All submissions for publication are to be mailed or emailed to the editor by the 25th of the month. All brags are to be current within 90 days of the event. Any photos submitted for publication can be in any format except a PDF. Original photos can be scanned if you mail them to me.*

# 2013 National Specialty Photo Contest

It's time to enter your best photos of your favorite Labrador Retrievers and share your love of the breed with the LRC Inc 2013 National Specialty. We are pleased to announce that [www.RetrieverLife.com](http://www.RetrieverLife.com) is the proud sponsor of the contest (*Toni Leitao* and *Lorraine Yu*, both members of the LRC and PSLRA, the host club for the National).

## Groups (categories):

- **“Working” Group** – Labradors doing what they've been bred to do (accompany their people in the field and retrieve game); doing their “job” whether it's getting the newspaper, baby sitting, or being a service dog; and don't forget performance sports (agility, etc.)
- **“Toy” Group** – Labradors love to play and usually some sort of (favorite) toy is involved
- **“Non-Sporting” Group** – Labradors love to relax and seem comfortable doing this anywhere and in any position
- **Puppy Group** – Labradors pups love just about anything – eating, sleeping, learning, playing, etc.

## Prizes:

- Best in Show – \$50 gift card
- Reserve Best in Show – \$25 gift card
- Group Winners (1<sup>st</sup> place) – \$10 gift card

Group Placements (2<sup>nd</sup>, 3<sup>rd</sup>, and 4<sup>th</sup>) will also be recognized. If the winner is not present, your prize will be emailed or mailed to you. Winning photos will be displayed at the LRC National Specialty.

**How to Enter:** The contest is open to any photographer, amateur, or professional, adult or minor. Each photographer may enter up to five (5) photos not to exceed any two (2) per category. There is no entry charge by the LRC, Inc. for this contest. All digital images must be in jpeg or png format and not be larger than 5 Mb. They must be at least 300 dpi. Color and Black & White images are acceptable, but images that are grainy, blurry, or show pixilation may not be suitable for judging. Manipulation of exposure, cropping, sharpening, and color adjustment or the digital equivalents are acceptable for all categories. Removing leashes is permissible, but extreme digital manipulation of the dog/subject is not and that entry will be disqualified by the judges. Do not sign photos or include names on the front of any photo.

**How to Submit your Entry:** Digital images should be emailed to [lrcphotocontest@hotmail.com](mailto:lrcphotocontest@hotmail.com). Entry information for each image should include name, phone number, and email address and the category you are entering for each photo. If the group or category is not specified, it will be assigned by the contest administrator.

**Judging:** Photos will be judged by a panel of professional photographers. All decisions of the judges are final.

**Deadline for Entries:** September 11, 2013 (same as closing date for show entries)

**Questions:** Please email [lrcphotocontest@hotmail.com](mailto:lrcphotocontest@hotmail.com)

**Additional Rules:** Entries containing children and adults will require a model release if not related to the photographer. Please contact or download from LRC website. By entering this contest, entrants grant the LRC, Inc. and Retriever Life a royalty-free, perpetual non-exclusive license to display, distribute, reproduce (whole or in part), in any media now existing or subsequently developed, for educational, promotional, publicity, exhibition, and all other standard purposes. Any photograph reproduced will include a photographer credit as feasible.



*The Labrador Retriever Club, Inc.*



## **Business Opportunities at the LRC National Specialty Show October 6th to 13th 2013**

It's time once again for the annual Labrador Retriever Club, Inc.'s National Specialty Show. This year's Specialty will be held at the Regional Athletic Complex, 8345 Steilacoom Rd. SE, in Lacey, Washington. We are excited to announce the following sales and marketing opportunities are available to pet and non-pet related businesses.

We encourage all members of the Labrador Retriever Club, Inc., Puget Sound Labrador Retriever Association and the Rose City Labrador Retriever Club to refer any and all businesses who may be interested in participating in the sales & marketing opportunities offered at the Labrador Retriever Club, Inc.'s National Specialty Show.

### **Attendee Welcome/Gift Bags**

#### **Business & Individual Marketing Opportunity**

As a way to welcome show entrants from near and far, we will be providing Welcome/Gift bags for all participants.

To make this year's bags special, we are encouraging anyone who would like to make a contribution to the Welcome/Gift bags to do so.

We also invite local businesses to take part in this unique marketing opportunity. Examples of items show participants may find useful in our Welcome/Gift Bags include, but are not limited to:

- Pens • Pet Waste Disposal Bags • Dog Toys
- People Snacks & Beverages • Coupons for Local Restaurants • Coupons for Pet & Non-Pet Services
- Local Attraction Information & Brochures
- Local Business Brochures & Business Cards

If you or your business are interested in contributing an item to our Welcome/Gift bags please contact: Leslie Douglas, Chair National Gift Bag Committee, 11025 6th Ave. W., Everett, WA 98204, Phone: 425.513.1005 or Email: [ledougl@aol.com](mailto:ledougl@aol.com)

Please Note: Since Purina is donating the gift bags plus dog food & treat samples, we cannot accept these types of contributions from other donors.

### **Vendor Booths**

#### **Pet and Non-Pet Products & Services Sales**

Shopping and pet services rate very high on the list of preferred activities for National Specialty attendees. To add that special touch to the show, Vendors are always welcome and encouraged.

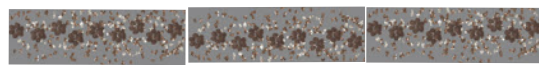
Booths will be for five days of show related events, and begin on October 7th and run through October 11th.

We are seeking the following types of businesses to participate in this year's vendor opportunities. Including, but not limited to:

- General Pet Supplies • Pet & Non-Pet Themed Apparel
- Breed / Non-Breed Specific Gifts & Specialty Items
- Veterinary Clinics • Holistic Pet Healthcare Providers
- Pet Intuitives • Performance & Companion Dog Trainers
- Groomers & Pet Spas • Doggie Day Care Centers
- Boarding Kennels • Pet Sitters & Dog Walkers
- Hunting & Outdoor Supply Retailers
- Other Non-Pet Related Goods & Services

Vendor space is offered at \$100.00 for an initial 10'x10' block, additional 10'x10' blocks are \$50.00 each, plus a product or services donation from the Vendor for the "Everyone Wins Raffle" and/or an item to be included in the event attendees Welcome/Gift Bags. Please Note: Vendors must provide all their own booth equipment.

For more information please contact: Cheri Wildes, Vendor Coordinator, 15909 10th St. SE, Snohomish, WA. 98290, Phone: 425.260.2338 (Cell) or Email: [cheri@gunsuplabs.com](mailto:cheri@gunsuplabs.com) to receive a Vendor Packet including a copy of our Vendor Agreement to secure booth space at this year's event.



Join your friends this coming October at the  
**LRC, Inc. National Specialty Event Week**

**October 6 – 13, 2013**



In *"The Shadow of the Cascades"*  
... the beautiful Pacific Northwest!

**TD/TDX Tracking**

**October 6**

Location to be determined

**Two Agility, Obedience & Rally Trials, CC Evaluations**

**LRC, Inc. Judges' Education Workshop**

**"Go Green" Specialty and the National Specialty**

**Pat Hastings' Educational Seminar—*"A Glimpse of Structure in Action"***

**October 7–11**

**Lacey, Washington**

All Companion Dog and Conformation Events will be held outdoors.

**Superintendent: BaRay Events ([barayevents.com](http://barayevents.com))**

**AKC Retriever Hunting Tests (Master, Senior, Junior), WC, CC Evaluations**

**October 12–13**

**Pepper's Farm, Carnation, Washington**

**Entry Express ([www.entryexpress.com](http://www.entryexpress.com))**

**Check the LRC website ([thelabradorclub.com](http://thelabradorclub.com)) for further information.**



**Contact: Jill Mahoney**

**LRC National Specialty Event Week Chairperson**

**E mail: [Mahoney@wwdb.org](mailto:Mahoney@wwdb.org) • Telephone 2536304810**